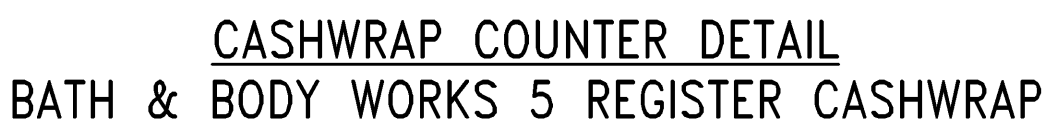
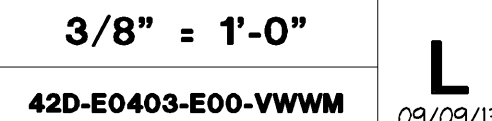
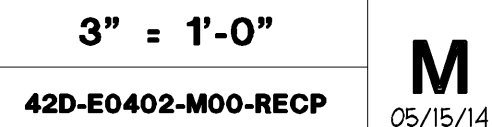


3/4" = 1'-0"	R 1/27/2012
42D-E0402-P00-DETL	

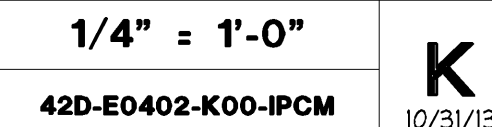
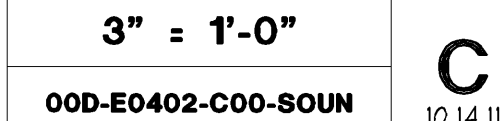


1. REFER TO ARCHITECTURAL SHEET A11.01 FOR ADDITIONAL INFORMATION.
2. WIRING DEVICES ARE SHOWN FOR REFERENCE ONLY. COORDINATE FINAL INSTALLATION LOCATION WITH LSSAC PROJECT MANAGER IN FIELD.
3. DATA TERMINALS AND CONNECTIONS BY P.O.S. CONTRACTOR.
4. RUN METAL CLAD (MC) CABLE TO EACH RECEPTACLE FROM JUNCTION BOXES THRU WIREWAY WITHIN CASHWRAP COVER.
5. WIRING FROM CONDUIT STUB-UPS TO JUNCTION BOXES ARE TO BE RUN IN FLEXIBLE CONDUIT.
6. LABEL AND TAG ALL PULLWIRE RUNS AT EACH END WITH ORIGIN/DESIGNATION.
7. IF FRONT PORTION OF CASHWRAP IS ADJACENT TO A WALL, CONTRACTOR SHALL ROUTE CONDUIT FROM THE BACKWRAP TO THE FRONT CASHWRAP THROUGH THE WALL ADJACENT TO CASHWRAP INSTEAD OF ROUTING THROUGH FLOOR.

3/8" = 1'-0"

42D-E0402-G00-US5C

10/31/13

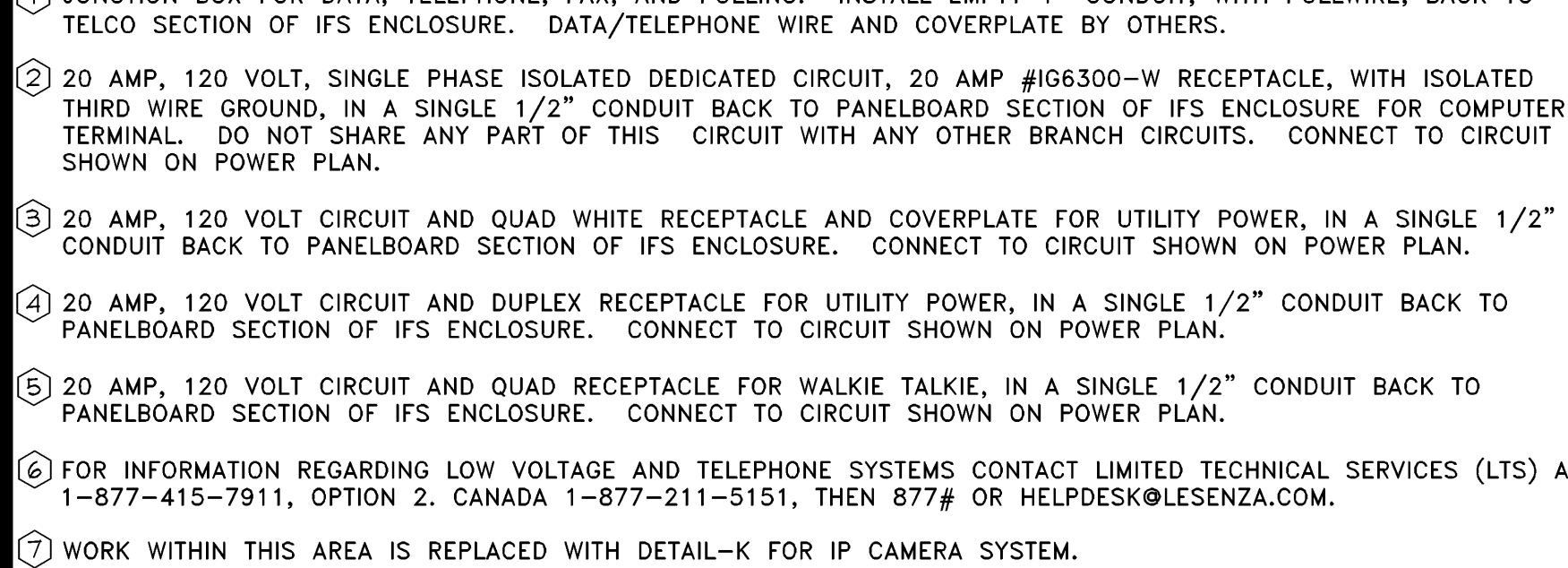


1. REFER TO ARCHITECTURAL SHEET A11.01 FOR ADDITIONAL INFORMATION.
2. WIRING DEVICES ARE SHOWN FOR REFERENCE ONLY. COORDINATE FINAL INSTALLATION LOCATION WITH LSD&C PROJECT MANAGER IN FIELD.
3. DATA TERMINALS AND CONNECTIONS BY P.O.S. CONTRACTOR.
4. LABEL AND TAG ALL PULLWIRE RUNS AT EACH END WITH ORIGIN/DESIGNATION.

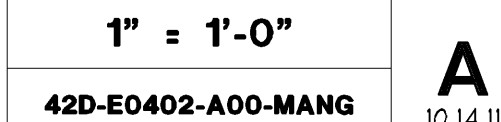
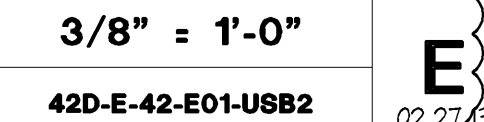
3/8" = 1'-0"

42D-E-42-E01-USB2

E



1" = 1'-0"	<div style="text-align: center;"> A 10 14 18 </div>
42D-E0402-A00-MANG	



DRAWING NUMBER:
E04.02